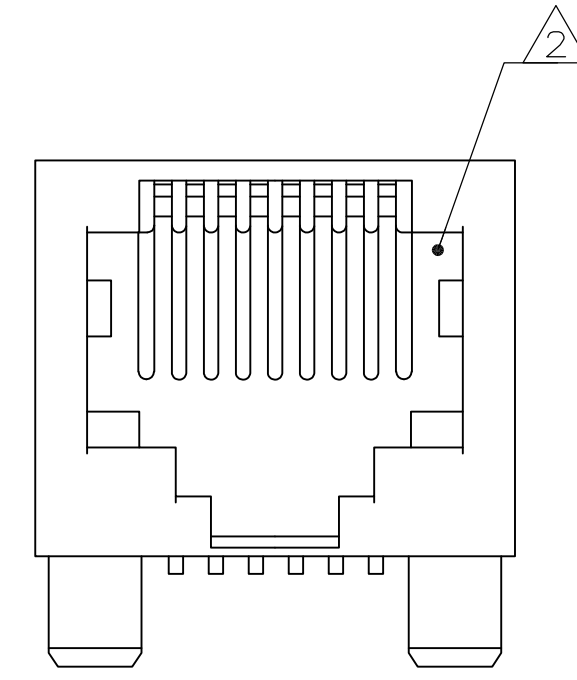
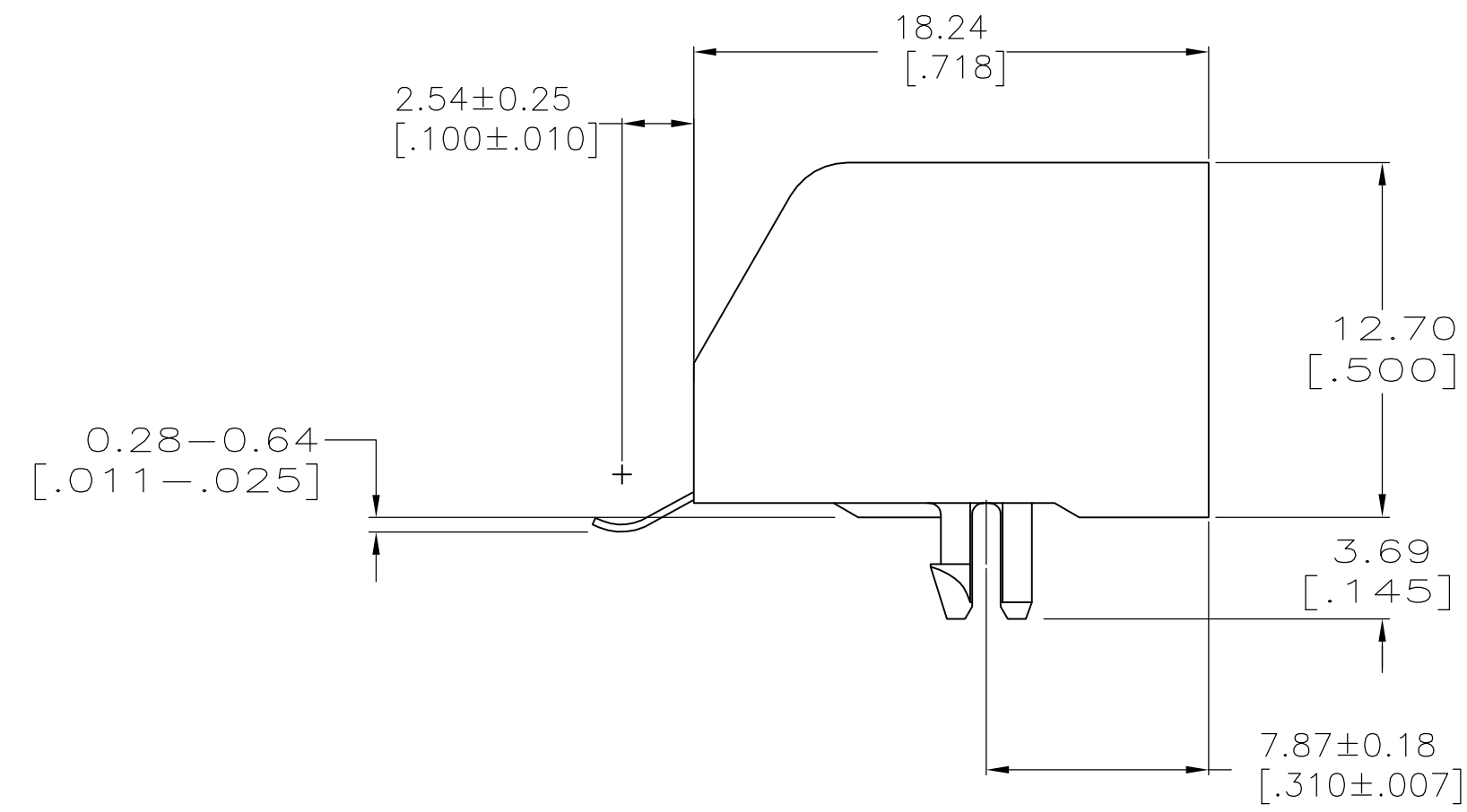


LOC	DIST	REVISIONS			
P	LR	DESCRIPTION	DATE	DRN	APPD
AA	00				
C1		REVISED PER ECO-11-005033	23MAR11	RK	HMR



- MATERIAL: HOUSING - HTN MOLDING COMPOUND, 94 VO, COLOR: BLACK.  
TERMINAL - 0.36 [0.014] THICK PHOS-BRONZE PLATE WITH 1.27µm [0.000050] MINIMUM THICK HARD GOLD IN LOCALIZED GOLD PLATE AREA AND 3.81µm [0.000150] MINIMUM THICK MATTE TIN IN SOLDER AREA OVER 1.27µm [0.000050] MINIMUM THICK NICKEL UNDERPLATE.

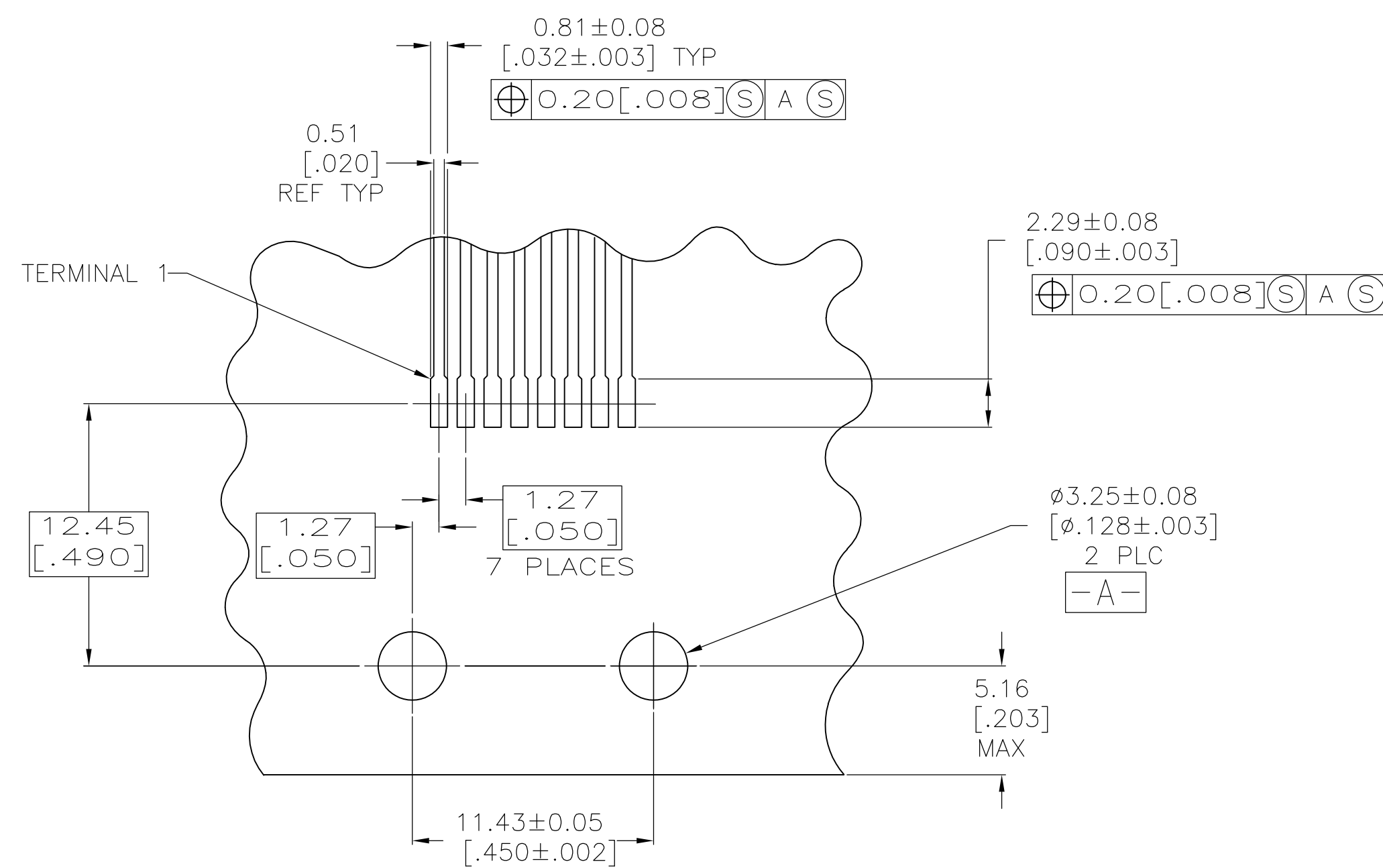
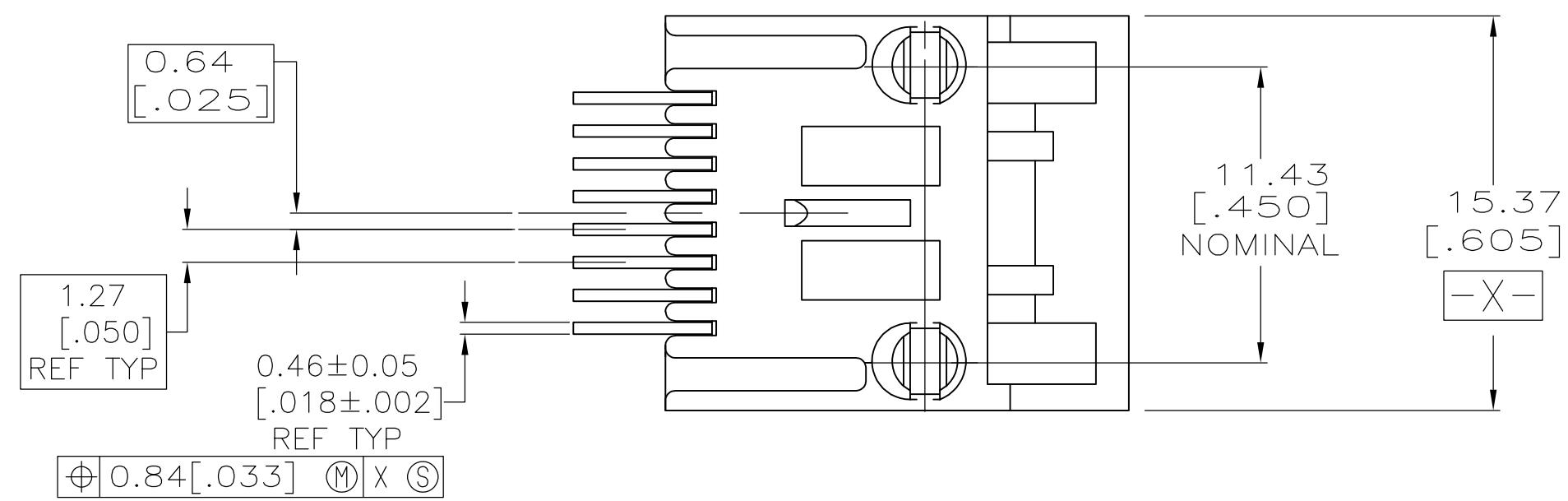
△ CAVITY CONFORMS TO FCC RULES AND REGULATIONS, PART 68, SUBPART F.

- ALL DIMENSIONS SHOWN ARE MAXIMUM UNLESS OTHERWISE SPECIFIED AND ARE PRIOR TO SURFACE MOUNT PROCESSING.

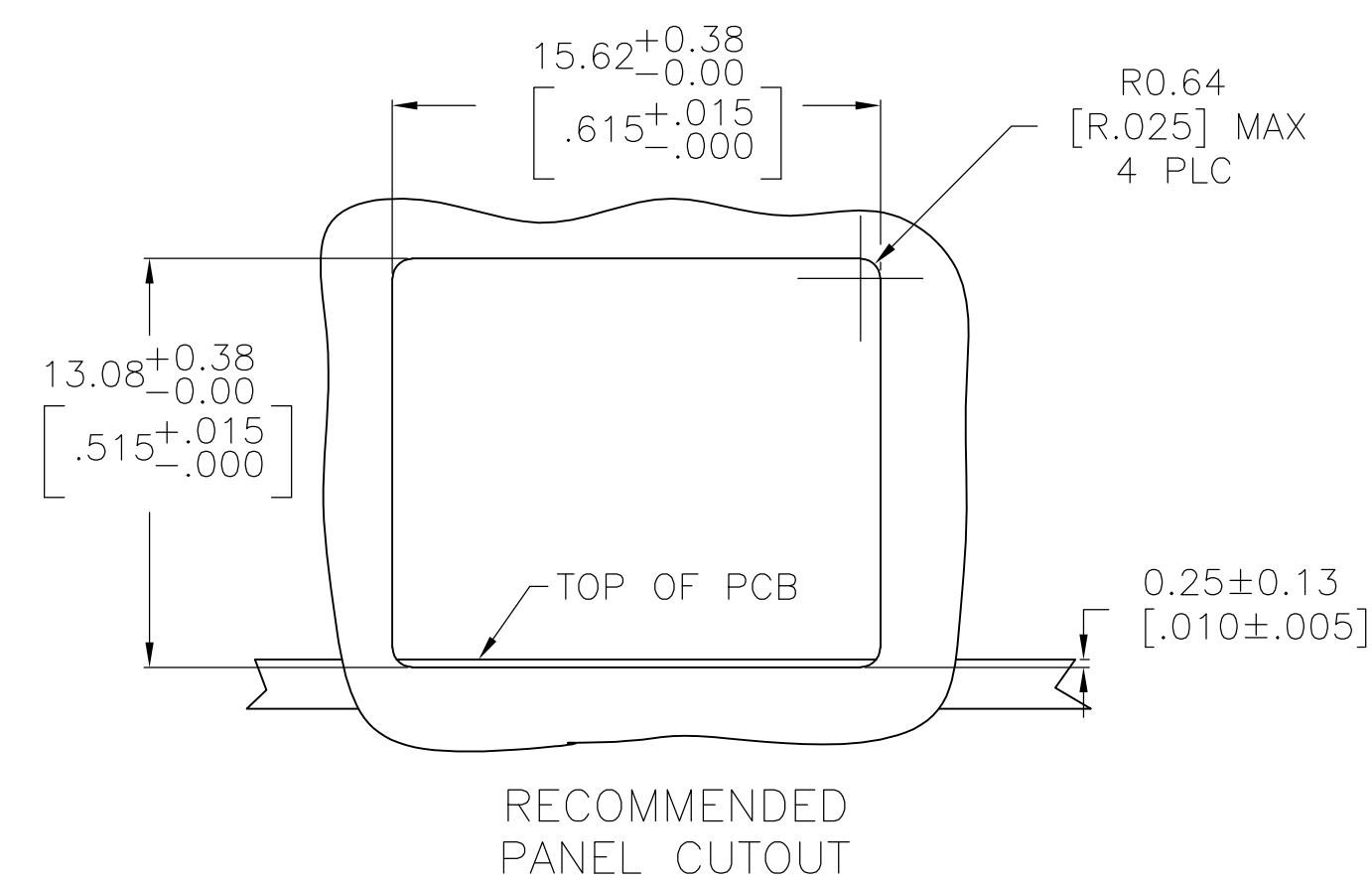
- SNAP-IN RETENTION FEATURE ACCOMMODATES 1.45-1.70 [0.062±0.005] THICK PRINTED CIRCUIT BOARD.

△ ASSEMBLIES ARE PACKAGED 36 IN A TUBE.

△ ASSEMBLIES ARE PACKAGED IN TRAYS.



RECOMMENDED PRINTED CIRCUIT BOARD LAYOUT  
COMPONENT SIDE



RECOMMENDED  
PANEL CUTOUT

△ 5	5555764-3
△ 6	5555764-1
PACKAGED	PART NO

THIS DRAWING IS A CONTROLLED DOCUMENT.		DRN G. ATTADIA - DOCKS 09JUN2005	NAME	MODULAR JACK ASSEMBLY, 8 POSITION, LOW PROFILE, RIGHT ANGLE, SURFACE MOUNT	
DIMENSIONS: mm(INCHES)		CHK J. WESTMAN 09JUN2005	PRODUCT SPEC	SIZE	CAGE CODE
TOLERANCES UNLESS OTHERWISE SPECIFIED:		APVD S. FLICKINGER 09JUN2005	108-1163	DRAWING NO	RESTRICTED TO
0 PLC ± -		APPLICATION SPEC	114-6040	A1 00779	5555764
1 PLC ± -		FINISH	SEE NOTE 1	SCALE	4:1
2 PLC ± -		MATERIAL	SEE NOTE 1	SHEET	1 OF 1
3 PLC ± -		WEIGHT	-	REV	C1
4 PLC ± -		CUSTOMER DRAWING			